

BUTTERFLY VALVE

Tecofi'
VALVE DESIGNER - FRANCE



TECHNICAL SPECIFICATION

DN : 40 up to 300
PN max : 16 bar
Temperature : 80°C



OTHER MODELS

- Lug type butterfly valve
- Wafer type butterfly valve
- Double eccentric type butterfly valve



Linked

Follow all our news
on our LinkedIn page

All our products and
datasheets on our website

www.tecofi.fr

Tecofi'
VALVE DESIGNER - FRANCE

83 rue Marcel Mérieux - CS 92013
69969 Corbas Cedex - France

T. +33 (0)4 72 79 05 79 - F. +33 (0)4 78 90 19 19
✉ sales@tecofi.fr

Ref. : VPE 3449 pas

Rev. : Initial

Date : 14/11/2017

Page : 1/1

BUTTERFLY VALVE WITH HANDLE

VPE 3449-02



APPLICATION

General use : water, air, acids, etc.
"Non suitable for steam application"

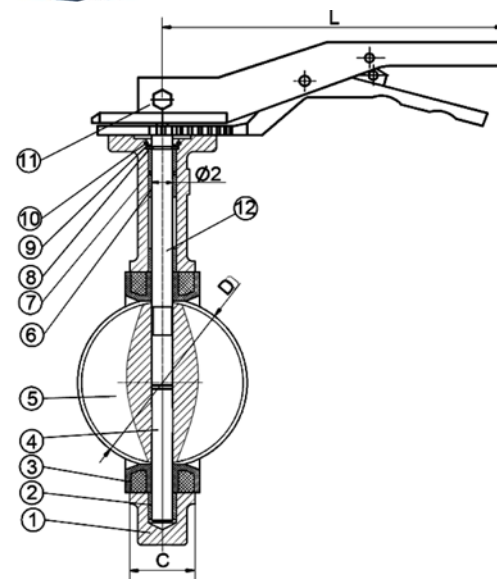
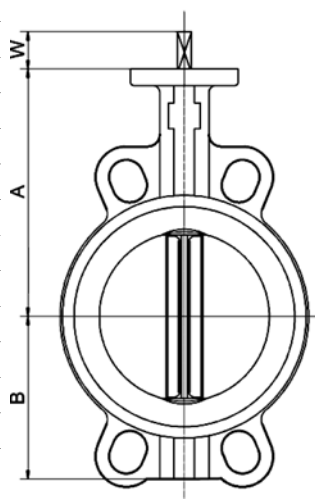
GENERAL CHARACTERISTICS

Design according with EN 593.
Tightness in both ways. Wafer type with smooth ears.
Flexible sleeve adapted to the shape of the body assures low operating torque. Monobloc stem from DN40 to DN80; high and low semi stem from DN100 to DN150. High flow coefficient. Machined disc on periphery giving a low and regular torque. Unejectable stem, mounting flange according to ISO 5211.



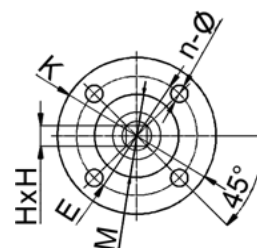
CONSTRUCTION

12	1	Upper shaft	Stainless steel 410
11	1	Handle	Ductile iron
10	1	Collar	65Mn
9	1	Gasket	Stainless steel 201
8	1	Ring	Stainless steel 201
7	1	O ring	NBR
6	2	Upper bushing	Fiber glass + PTFE
5	1	Disc	Stainless steel 316
4	1	Lower shaft	Stainless steel 410
3	1	Sleeve	Heat EPDM
2	1	Lower bushing	Fiber glass + PTFE
1	1	Body	Cast iron EN GJL250
Pos.	Q ty	Description	Material



DIMENSIONS

DN		A	B	C	D	Ø2	ISO 5211	K	E	n-Ø	M	HxH	W	L	Weight (kg)
mm	inch														
40	1 1/2	135	65	33	42,5	12,6	F05	65	50	4-7	35	9x9	32	180	2,3
50	2"	140	80	43	52,9	12,6	F05	65	50	4-7	35	9x9	32	180	2,86
65	2 1/2	150	89	46	64,5	12,6	F05	65	50	4-7	35	9x9	32	180	3,4
80	3"	158	95	46	78,8	12,6	F05	65	50	4-7	35	9x9	32	180	3,6
100	4"	176	114	52	104	15,8	F05	65	50	4-7	35	11x11	32	180	4,5
125	5"	190	127	56	123	18,9	F07	90	70	4-10	55	14x14	32	220	6,96
150	6"	212	139	56	156	18,9	F07	90	70	4-10	55	14x14	32	220	8,5



Upper flange ISO 5211

WORKING CONDITIONS

Maximum working pressure : 16 bar.
Maximum working temperature : -15°C / +130°C.
Peak temperature: -30°C / +150°C

STANDARDS

Manufacture according to the requirements of the European directive 2014/68/UE «Equipment under pressure»: modulate H.
Face to face according to standards NF EN 558-1 serie 20, ISO 5272 série 20, DIN 3202.
Mounting between flanges PN 10 / PN 16: according to EN 1092-2, BS450,AISI B16.1-5.
Adjustable between flanges ASME B16.5 Classe 150 et JIS 10K. GOST PN10/16..
Pressure test according to standards EN 12266-1, DIN 3230, BS 6755 and ISO 5208 :
Corps: 24 bar
Siège: 17.6 bar

Ref. : A1901008-001

Rev. : A

Date : 10/01/2019

Page : 1/1

BUTTERFLY VALVE WITH GEAR BOX

VPE 4449-08



Tecofi 
VALVE DESIGNER - FRANCE

APPLICATION

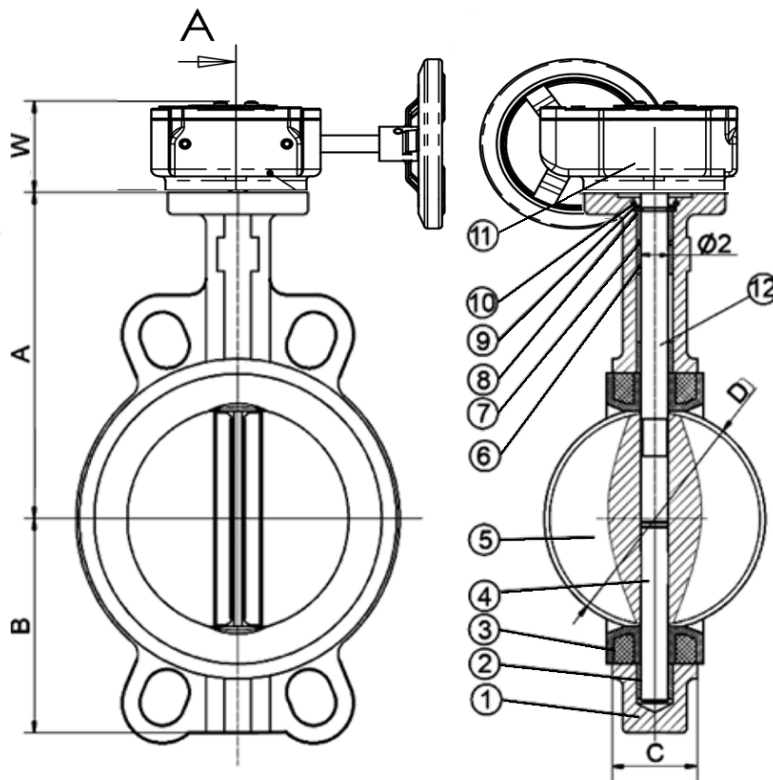
General use : water, air, acids, etc.
"Non suitable for steam application"

GENERAL CHARACTERISTICS

Design according with EN 593.
Tightness in both ways. Wafer type with smooth ears.
Flexible sleeve adapted to the shape of the body assures low operating torque. High flow coefficient. Machined disc on periphery giving a low and regular torque. Unejectable stem, mounting flange according to ISO 5211.

CONSTRUCTION

12	1	Upper shaft	Stainless steel 410
11	1	Gear box	Ductile iron
10	1	Collar	65Mn
9	1	Gasket	Stainless steel 201
8	1	Ring	Stainless steel 201
7	1	O ring	NBR
6	2	Upper bushing	Fiber glass + PTFE
5	1	Disc	Stainless steel 316
4	1	Lower shaft	Stainless steel 410
3	1	Sleeve	Heat EPDM
2	1	Lower bushing	Fiber glass + PTFE
1	1	Body	Ductile iron EN-GJS500-7
Pos.	Q-ty	Description	Material



DIMENSIONS

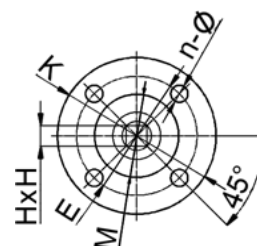
DN		A	B	C	D	Ø2	ISO 5211	K	E	n-Ø	M	HxH	W	Weight (kg)
mm	inch													
200	8"	235	174	60	203	22,1	F10	125	102	4-12	70	17x17	450	17,6
250	10"	265	203	68	251	28,5	F10	125	102	4-12	70	22x22	450	24,4
300	12"	305	242	78	302	31,6	F10	125	102	4-12	70	22x22	450	35

WORKING CONDITIONS

Maximum working pressure : 16 bar.
Maximum working temperature : -15°C / +130°C.
Peak temperature: -30°C / +150°C

STANDARDS

Manufacture according to the requirements of the European directive 2014/68/UE «Equipment under pressure»: modulate H.
Face to face according to standards NF EN 558-1 serie 20, ISO 5272 série 20, DIN 3202.
Mounting between flanges PN 10 / PN 16: according to EN 1092-2, BS450, AISI B16.1-5.
Adjustable between flanges ASME B16.5 Classe 150 et JIS 10K. GOST PN10/16..
Pressure test according to standards EN 12266-1, DIN 3230, BS 6755 and ISO 5208 :
Corps: 24 bar
Siège: 17.6 bar



Upper flange ISO 5211